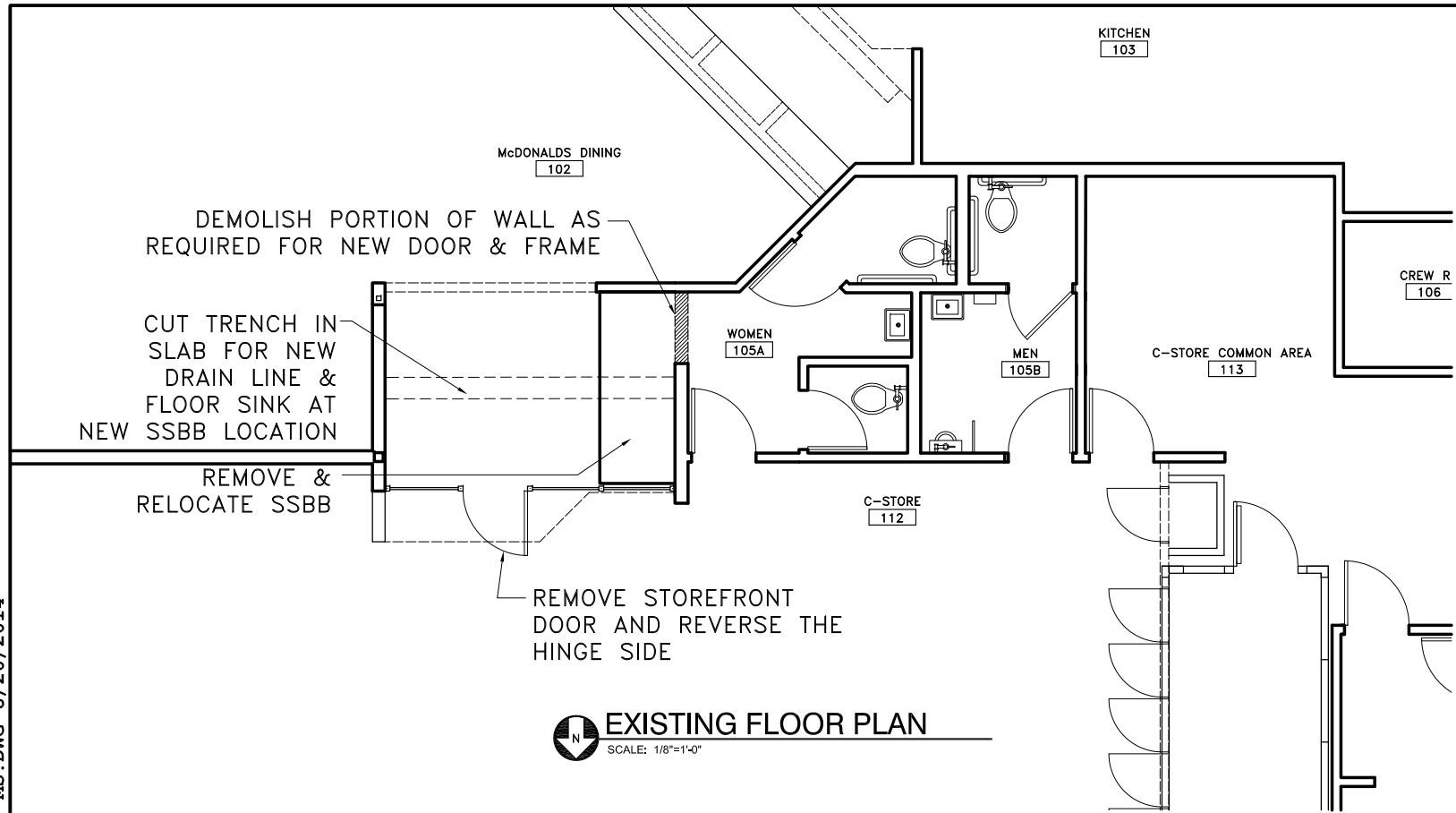
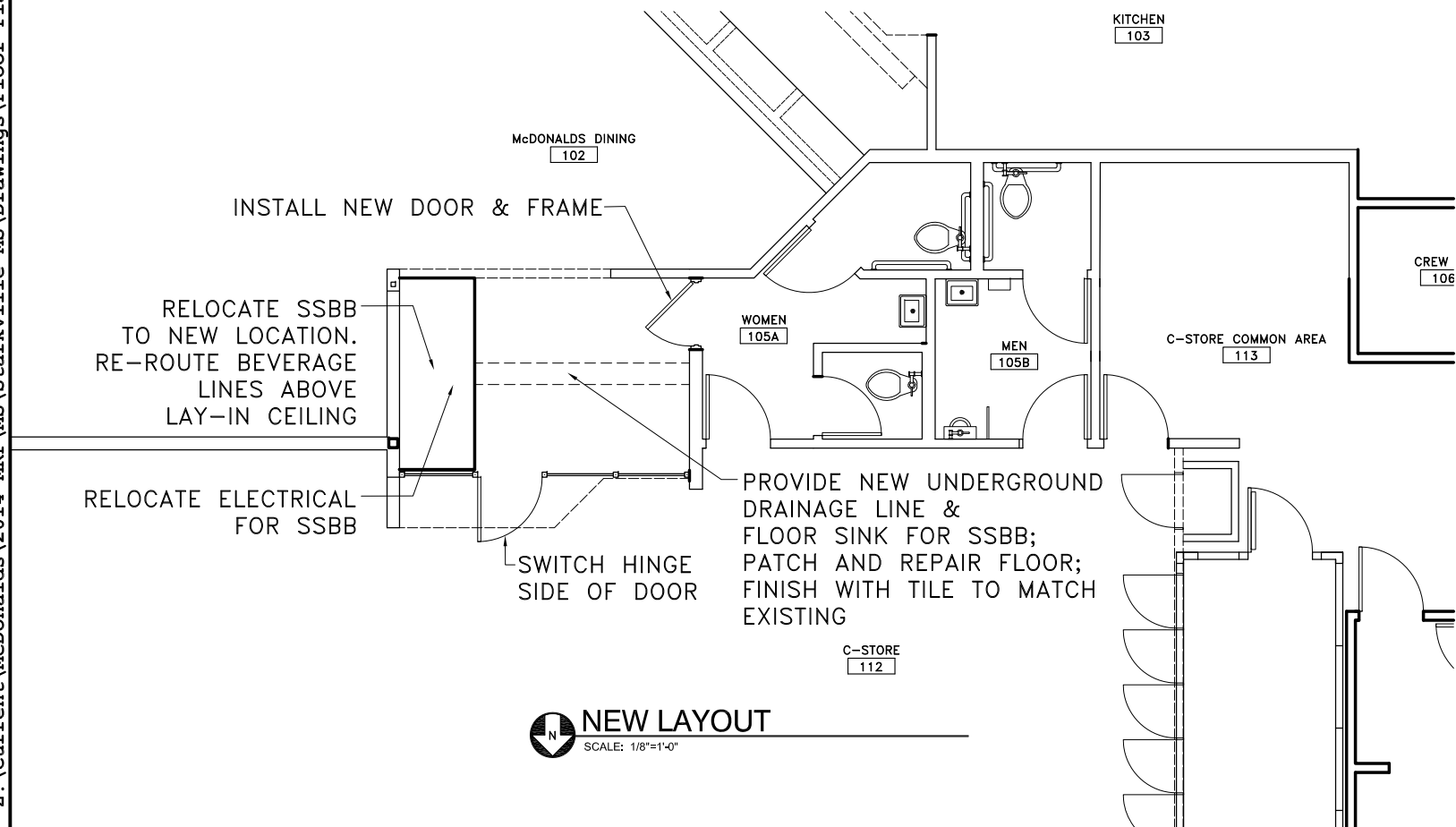


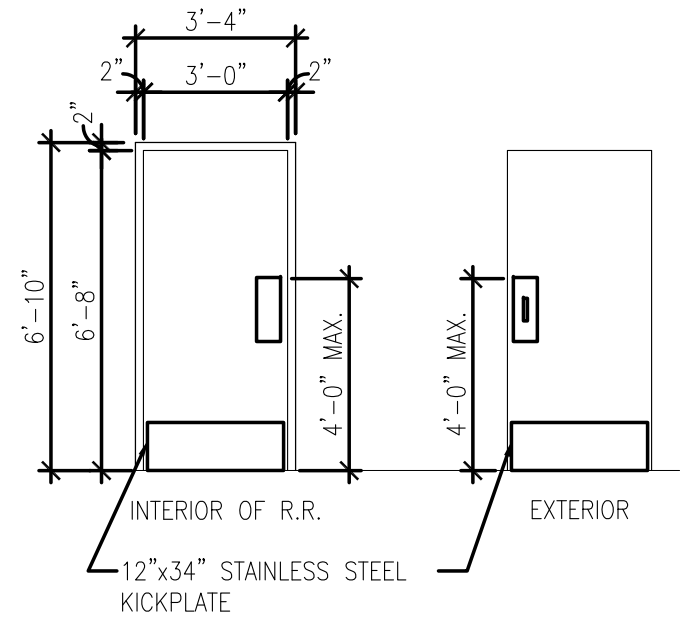
Z:\Current\McDonalds\2014 MRP\MS\Starkville MS\Drawings\Floor Plan Starkville, MS.DWG 8/20/2014



EXISTING FLOOR PLAN
SCALE: 1/8"=1'-0"



NEW LAYOUT
SCALE: 1/8"=1'-0"



NOTE: NO THRESHOLD REQUIRED & DOOR
TO BE UNDERCUT BY 1"

DOOR:

—SC. DOOR — PAINT TO MATCH EXISTING

FRAME:

—16 GA. HOLLOW METAL WELDED FRAME. —FRAME
PRIMED FOR PAINTING.
—PROVIDE JAMB REINFORCEMENT AT EACH HINGE.
—PAINT TO MATCH EXISTING;
PAINT USE OIL BASED PAINT

HARDWARE:

—1 1/2 PAIR HAGER BUTT HINGES
—BB 1279 26D 4 1/2" X 4 1/2"
—1 LCN OR APPROVED EQUAL DOOR CLOSER
#1460 ALUM. COVER (VERIFY DOOR HAND)
—1 HAGER #240F FLOOR STOP US26
—2 SCHLAGE (IVES) KICKPLATES ALUM.
—16 GAUGE STAINLESS STEEL
—1 IVES PUSH/PULL PLATE #8302-6 AND #8200
—3 HAGER #307D SILENCERS

Robert Kempkes

ARCHITECT
210 CENTRAL AVE., STE. 2A HOT SPRINGS, AR 71911 FAX 501-621-5166 PHONE 501-621-5879

RESTROOM RENOVATION
STARKVILLE, MS

Project No.
Drawn By: WCS
Date: 8/19/2014
Revision:

A1.0
Sheet 1 OF 1